

12.8V 400AH LIFEPO4 BATTERY

Electrical Specificaton

Nornimal Voltage	12.8V
Nornimal Capacity	400Ah
Storage Energy	5120Wh
Self Discharge	<3% per month
Energy Efficiency	>98%

Interior Structure

Configuration	4S2P/4S4P
Battery Cell	Grade A 3.2V LiFePO4 Cell
Build-in BMS	100A BMS
Cycle Life	6000 times(85% DOD)

Charge Specifications

Continuous Charge Current	100A
Max Charge Current	100A
Charge Cut-off Voltage	14.6V
Charge Mode	CC/CV:Constant Current/ Constant Voltage

Discharge Specifications

Continuous Discharge Current	100A
Max Discharge Current	100A
Disharge Cut-off Voltage	9V

Temperatue Specifications

Continuous Discharge Current	0°C ~ 50°C
Max Discharge Current	-10°C~55°C
Disharge Cut-off Voltage	-10°C~45°C@60±25% humidy

Mechanical Specifications

Terminal Type	M8
Case Material	ABS BOX
Waterproof IP Level	IP65/IPX8
Dimensions	522*240*223mm
Weight	42KG
Packing	1 pcs in one Carton

Other Service

Series or Paralle	4S4P
Optional Function	LCD/Bluetooth
OEM/ODM	Sticker/Logo/Package/Connector
Certification	CE,MSDS, ROHS,etc



Queen Solar 12V Series LiFePO4 Battery EXCLUSIVE BENEFITS

* 5 years warranty to provide after sale service,including resend new battery or reolacement BMS.

* Factory Direct Supply: We have own R&D Department to provide ODM and OEM services.

* Queen Solar Exclusive Selling Points:

adopt **EXCLUSIVE BRACKET** , which is significant for battery battery performance ,durable usage and longer cycle life.

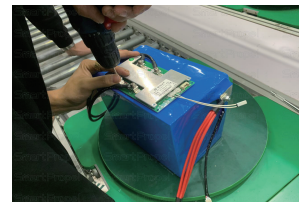
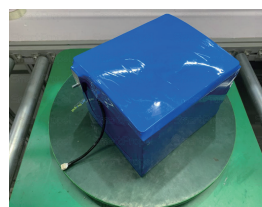
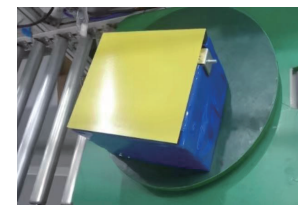
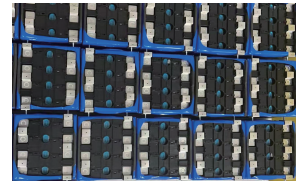
Further more,

1)Add EPE for **Anti-Vibration** , even on bumpy road driving can be well protects the battery pack.

2)Epoxy Board exist for good **isolutation** , extreme protect the battery pack any safety risk

3) **Quadruple protection** PVC film, well package the battery pack, for waterproof and better protection for whole battery pack.

Bracket/EPE/Epoxy/PVC, 4 advanced steps for battery highest level protection which make our battery more competitive than other brands.

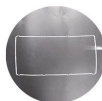


Upgraded Screw Type 12V 400AH battery shell:

1) **Maintenance** , can open shell easily by screws to replace BMS easily. Compared with traditional 12V 400Ah battery case is sealed by strong adhesive glue,can not open the top cover after sealed. If disassemble compulsively, the battery pack shell will be scrapped! Queen Solar upgraded screw type 12V 400Ah battery pack is sealed by environmental protection sealing ring and screws, can easy disassemble. When necessary, can open and exchange BMS or accessories in 5 minutes.

2) **Highest waterproof** level IPX8 authority certification report(Much higher proteciton level than most IP65 spread on the market), under 1 meter water can stay for more than 30 minutes without water inflow and battery pack still can be well used.

Upgrade 12V 100Ah Screw Type Accessories



IP65 sealing ring

High density sealing ring can protect battery waterproof, clean and tidy

- | | |
|------------------|--------------------------|
| 1 1 Cover | 4 2 Terminal Sheath |
| 2 1 Bottom Case | 5 8 Screws |
| 3 1 Nylon Handle | 6 8 Waterproof Gum Cover |

