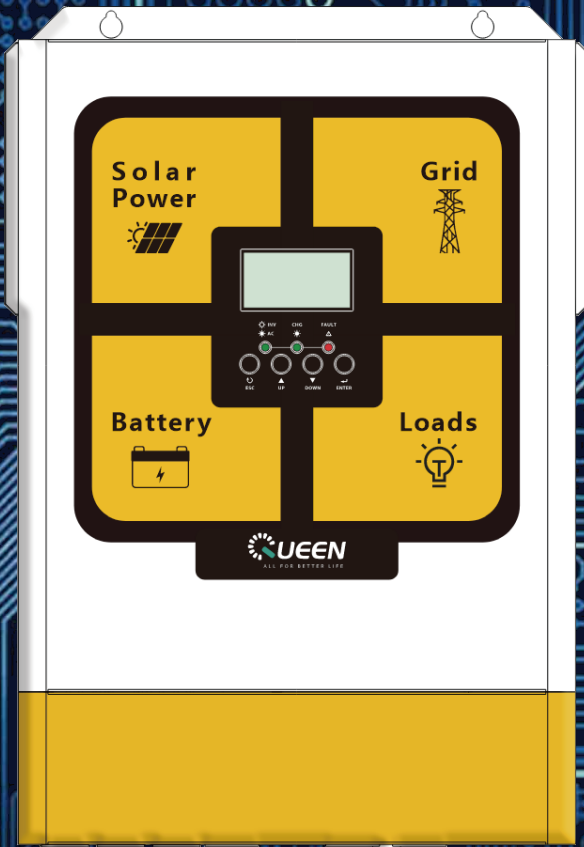


On / Off- Grid Hybrid

5.5 / 6.2KW 220 / 230Vac Output



Features

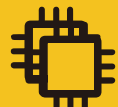
- Output power factor 1.0
- High PV input voltage range 500Vdc Max
- Built-in MPPT solar controller 100A
- WiFi remote monitoring optional
- Reserved communication port for BMS
- Detachable dust cover for harsh environment
- Self-consumption and Feed-in to the grid
- User-adjustable charging current and voltage
- Programmable supply priority for PV, Battery or Grid
- Support multiple output priority: SBU / SUB / SUF / ZEC
- Parallel operation up to 12 units in 1phase or 3phase
- EQ function to optimize battery performance and extend lifecycle
- Programmable multiple operation modes : Grid-tie, off-grid and grid-tie with backup
- Backflow prevention via external CT sensor and grid connection function



PF=1.0



PV Input
500Vdc Max



Built -120A MPPT



Feed-in to the Grid



CT Sensor



High Efficiency



Multi Stage
Charging



Multiple Charging
Methods



No Battery Mode



MPPT Charger



Pure sine wave



Parallel 12 units

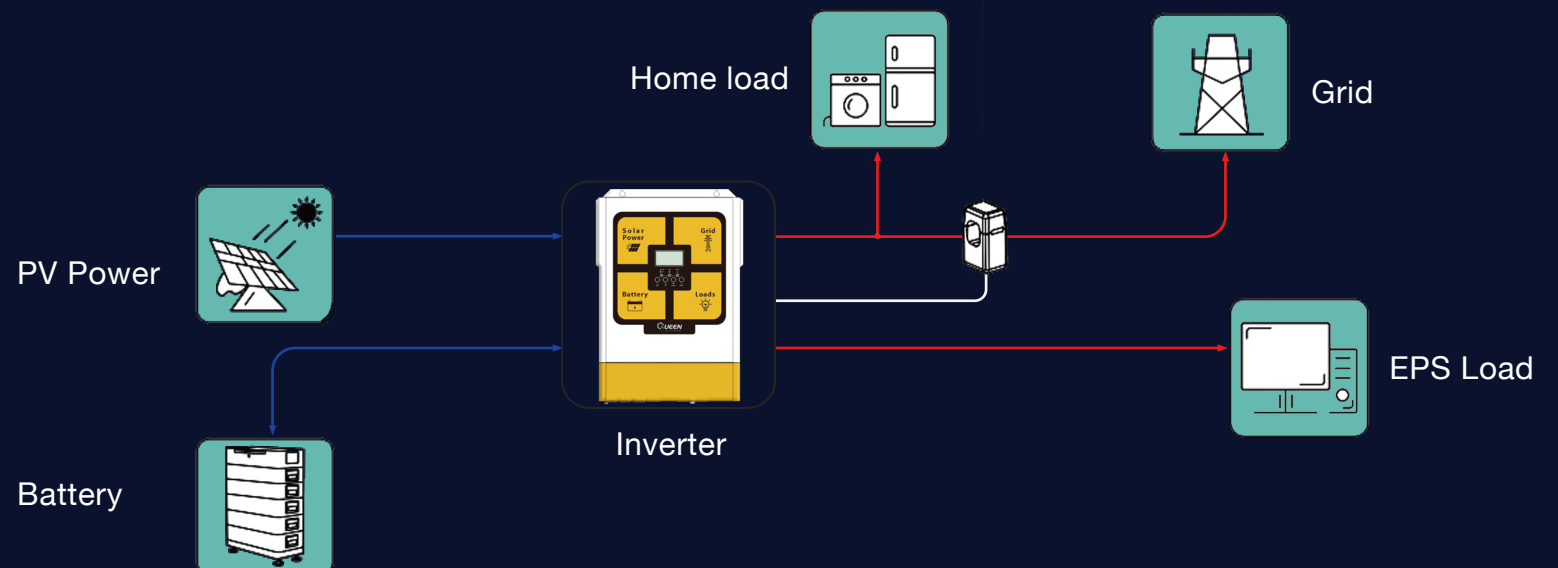


RS232 RS485



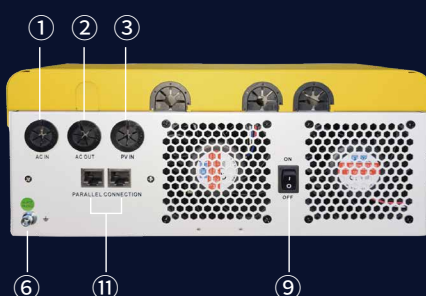
WIFI

System Diagram

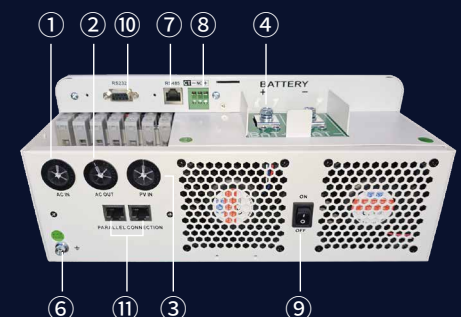


Bottom view

1. AC input
2. AC output
3. PV input
4. Battery input
5. Circuit breaker
6. Grounding



7. RS485 communication port
8. AC grid current sensor
9. Power on/off switch
10. RS232 communication port
11. Parallel communication port (for parallel model only)



Technical Data

MODEL	Master 5500-LV	Master 6200-LV
Phase	1-Phase In /1-Phase Out	1-Phase In /1-Phase Out
Maximum PV input power	5500W	6200W
Rated output power	5500VA / 5500W	6200VA / 6200W
Lithium battery activation	No	No
Lithium battery communication	Yes	Yes
GRID-TIE OPERATION		
PV INPUT (DC)		
Nominal DC Voltage / Maximum DC Voltage	360VDC / 500VDC	
Start-up Voltage / Initial Feeding Voltage	150VDC / 120VDC	
MPP Voltage Range	120VDC ~ 450VDC	60VDC~500VDC
Number of MPP Trackers / Maximum Input Current	1/18A	1/27A
GRID OUTPUT (AC)		
Nominal Output Voltage	220 / 230 / 240VAC	
Output Voltage Range	170-280VAC or 90-280VAC	
Nominal Output Current	22A	27A
Power Factor	0.6~1 (inductive or capacitive)	
Maximum Conversion Efficiency (DC/AC)	94%	
OFF-GRID OPERATION		
AC INPUT		
AC Start-up Voltage / Auto Restart Voltage	100Vac / 90Vac	
Acceptable Input Voltage Range	170-280VAC or 90-280VAC	
Maximum AC Input Current	40A	
PV INPUT (DC)		
Maximum DC Voltage	500VDC	
MPPT Voltage Range	120VDC~450VDC	60VDC~500VDC
Number of MPPT Trackers / Maximum Input Current	1/18A	1/27A
BATTERY MODE OUTPUT (AC)		
Nominal Output Voltage	220/230/240VAC	
Output Waveform	Pure Sinewave	
Efficiency (DC to AC)	94%	
HYBRID OPERATION		
PV INPUT (DC)		
Nominal DC Voltage / Maximum DC Voltage	360VDC/500VDC	
Start-up Voltage / Initial Feeding Voltage	150VDC/120VDC	
MPPT Voltage Range	120VDC~450VDC	60VDC~500VDC
Number of MPPT Trackers / Maximum Input Current	1/18A	1/27A
GRID OUTPUT (AC)		
Nominal Output Voltage	220/230/240VAC	
Output Voltage Range	170-280VAC or 90-280VAC	
Nominal Output Current	22A	27A
AC INPUT		
AC Start-up Voltage / Auto Restart Voltage	100Vac/90Vac	
Acceptable Input Voltage Range	170-280VAC or 90-280VAC	
Maximum AC Input Current	40A	
BATTERY MODE OUTPUT (AC)		
Nominal Output Voltage	48VDC	
Efficiency (DC to AC)	94%	
BATTERY & CHARGER		
Nominal DC Voltage	48VDC	48VDC
Maximum Solar Charging Current	100A	120A
Maximum AC Charging Current	60A	80A
Maximum Charging Current	100A	120A
GENERAL		
PHYSICAL		
Dimension, D x W x H (mm)	448*315*122	450*300*130
Net Weight (kgs)	11	12
INTERFACE		
Parallel Function	1-phase parallel*12 or 3-phase parallel*12	
Communication Port	RS232+RS485+ External CT Port	
ENVIRONMENT		
Humidity	5%~95% Relative Humidity (Non-condensing)	
Operating Temperature	-10°C~50°C	

Product specifications are subject to change without further notice.